

HAVE A HEART, GIVE A \$1.00



In memory of

---

Original artwork by Gwen Sylvester (<http://home.gwi.net/~gwens/>)

Original photography by Helmi (<http://www.helmiflick.com>)

Sanctioned by the Cat Fancier Association's Sphynx Breed Council

100% of donations will go to the WINN Foundation Sphynx research project.

*Text contributions regarding HCM affects credited to the following:*

[FELINE ADVISORY BUREAU](#)

[WINN FOUNDATION SPHYNX HCM RESEARCH PROJECT](#)

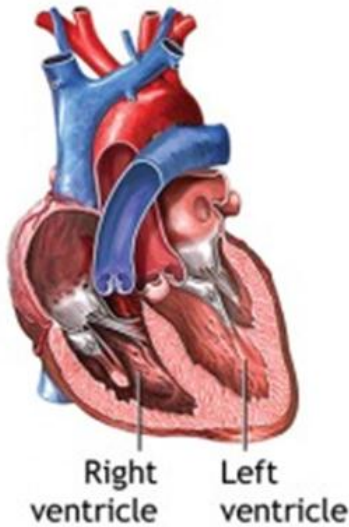
*Artwork and Photography*

[Gwen Sylvester Artwork](#)

[Helmi Flick Photography](#)

# FELINE HCM AFFECTS CATS AT ANY AGE

Normal heart



Hypertrophic cardiomyopathy



Enlargement of heart muscle

ADAM

## HCM DEFINITION

HCM is a disease in which the heart's papillary muscles that anchor the mitral valve and the walls of the left ventricle become abnormally thickened as the muscles thicken and the heart's chamber volume decreases, the heart pumps a reduced volume of blood.

SPHYNX ARE NOT THE ONLY BREED AFFECTED BY HCM. OTHERS INCLUDE AMERICAN AND BRITISH SHORTHAIR, SCOTTISH FOLD, MAINE COON, DEVON REX, PERSIAN, SIBERIAN, NORWEGIAN FOREST CAT, TURKISH VAN, AND RAGDOLLS.

Echocardiography is not a perfect tool for the diagnosis of HCM; however it is the most sensitive method currently available for detecting early signs of disease.

## SCREENING FOR HCM

Auscultation (listening with a stethoscope for abnormal heart sounds such as heart murmurs) is a less accurate means of detecting affected cats as a significant percentage of cats with HCM will not have an audible heart murmur.

HCM can occur at any age and therefore a single normal echocardiogram does not guarantee that the cat will remain free of the disease. Cardiologists recommend that breeding cats should have an annual echocardiogram during their breeding years. Examining retired cats periodically is also advantageous as this may allow the identification of affected cats that have offspring in a breeding program.

HAVE A HEART, GIVE A \$1.00



In memory of

Original artwork by Gwen Sylvester (<http://home.gwi.net/~gwens/>)  
Original photography by Helmi (<http://www.helmiflick.com>)  
Sanctioned by the Cat Fancier Association's Sphynx Breed Council  
100% of donations will go to the WINN Foundation Sphynx research project.

HAVE A HEART, GIVE A \$1.00



In memory of

Original artwork by Gwen Sylvester (<http://home.gwi.net/~gwens/>)  
Original photography by Helmi (<http://www.helmiflick.com>)  
Sanctioned by the Cat Fancier Association's Sphynx Breed Council  
100% of donations will go to the WINN Foundation Sphynx research project.

HAVE A HEART, GIVE A \$1.00



In memory of

Original artwork by Gwen Sylvester (<http://home.gwi.net/~gwens/>)  
Original photography by Helmi (<http://www.helmiflick.com>)  
Sanctioned by the Cat Fancier Association's Sphynx Breed Council  
100% of donations will go to the WINN Foundation Sphynx research project.

HAVE A HEART, GIVE A \$1.00



In memory of

Original artwork by Gwen Sylvester (<http://home.gwi.net/~gwens/>)  
Original photography by Helmi (<http://www.helmiflick.com>)  
Sanctioned by the Cat Fancier Association's Sphynx Breed Council  
100% of donations will go to the WINN Foundation Sphynx research project.